

PARTS MANUAL

RECOLLECTOR

RECOLLECTOR



FIGURE	REFERENCE	DENOMINATION	AMOUNT
001	AT.11001.00	CUBIERTA 1200	1
001	15.12331.00	CILINDRO ALETAS D600X1200 CEPI	1
002	AT.11002.00	SKIP	1
003	AT.11003.00	SOP. PAS. REC	2
004	AT.11004.00	NUT	8
005	104.10000.00	WASHER DIN7980 D10	8
006	603.10025.86	SCREW DIN933 M10x25	8
007	603.12045.86	SCREW DIN933	2
008	701.12000.66	NUT DIN934 M12x1.75	2
009	711.12000.66	NUT DIN982 M12	25
009	711.12000.66	NUT DIN982 M12	25
010	AT.11010.00	SOP. FIJACION GOMA TRASERA	1
011	AT.11011.00	GUARD	1
012	AT.11012.00	FIXING SUPPORT	2
013	AT.11013.00	GUARD	2

014	603.06020.86	SCREW DIN933 M6x20	17
015	711.06000.66	NUT DIN982 M6	17
016	AT.11016.00	GUARD	1
017	AT.11017.00	SCREW	7
018	AT.11018.00	RING	2
019	104.08000.00	WASHER DIN7980 D8	2
019	104.08000.00	WASHER DIN7980 D8	2
020	603.08020.86	SCREW DIN933 M8x20	2
021	601.12040.86	SCREW DIN912	1
022	AT.11022.00	SHAFT CIL/CIL	1
023	AT.11023.00	BEARING DIN625	1
024	AT.11024.00	BEARING SUPPORT	1
025	AT.11025.00	WASHER	1
026	AT.11026.00	WASHER	1
027	AT.11027.00	RING	83
028	AT.11028.00	AXLE CIL/EST	1
029	AT.11029.00	BUSH	1
030	612.06010.86	SCREW DIN814	1
031	AT.11031.00	RING 0,5 MM.	1
032	AT.11032.00	SOP. MOTOR HIDRAULICO	1
033	AT.11033.00	STRIGHT SUPPORT	2

RECOLLECTOR RECOLLECTOR

FIGURE	REFERENCE	DENOMINATION	AMOUNT
034	AT.11034.00	WASHER DIN125*	11
035	AT.11035.00	BUSH	5
036	603.12035.86	SCREW DIN933	19
037	AT.11037.00	SCREW	2
038	AT.11101.00	HYDRAULIC ENGINE	1
039	104.12000.00	WASHER DIN7980 D12	2
039	104.12000.00	WASHER DIN7980 D12	2
040	AT.11039.00	SCREW	1
041	AT.11040.00	SPRING TENSION	1
042	101.08000.66	WASHER DIN125 D8	10
043	701.08000.66	NUT DIN934 M8x1,25	3
044	603.08020.86	SCREW DIN933 M8x20	2
045	603.08020.86	SCREW DIN933 M8x20	8
046	AT.11045.00	COVER	1
047	AT.11046.00	APOYO DE CUBIERTA DEL MOTOR	1
048	AT.11047.00	PROTECCION	1

049	603.08025.86	SCREW DIN933 M8x25	3
050	104.08000.00	WASHER DIN7980 D8	3
051	AT.11050.00	WASHER DIN125*	3
052	AT.11051.00	SUPPORT ART.	2
053	604.12100.86	SCREW DIN931 M12x100	3
054	AT.11053.01	WHEEL RIM	2
055	901.10000.33	GREASER DIN71412-A	6
056	AT.11055.00	BUSH	3
057	AT.11056.00	SUPPORT ART.	1
058	AT.11057.00	ACC.LEVER	1
059	AT.11058.00	CONTROL LEVER	1
060	AT.11059.00	SPRING TENSION	1
061	604.10045.86	SCREW DIN931	1
062	711.10000.66	NUT DIN982 M10x1.5	1
063	604.12065.86	SCREW DIN931	1
064	101.12000.66	WASHER DIN125 D12	2
065	AT.11064.00	SPRING	2
066	603.06020.86	SCREW DIN933 M6x20	2
067	AT.11066.00	SPRING TORSION	1
068	AT.11067.00	SPRING TORSION	1

RECOLLECTOR RECOLLECTOR

FIGURE	REFERENCE	DENOMINATION	AMOUNT
069	AT.11068.00	WASHER	2
070	603.08025.86	SCREW DIN933 M8x25	2
071	AT.11070.00	PLACA DEL FONDO	3
072	AT.11071.00	CLAMP	6
073	AT.11072.00	PLACA SUPERIOR	3
074	601.06035.86	SCREW DIN912	3
075	AT.11074.00	CLAMP	1
076	AT.11075.00	PLACA DEL FONDO	4
077	AT.11076.00	CLAMP	8
078	AT.11077.00	PLACA SUPERIOR	4
079	601.08035.86	SCREW DIN912	4
080	AT.11079.00	CLAMP	1
081	AT.11080.00	ADHESIVE	2
082	AT.11081.00	ADHESIVE	2
083	AT.11082.00	ADHESIVE	1
084	AT.11083.00	Recollector right	1
085	AT.11084.00	Recollector left	1



086	AT.11085.00	SUPPORT ART.	1
087	AT.11086.00	SUPPORT ART.	1
088	AT.11087.00	GREASER DIN71412-A	3

07. WHEEL

WHEEL

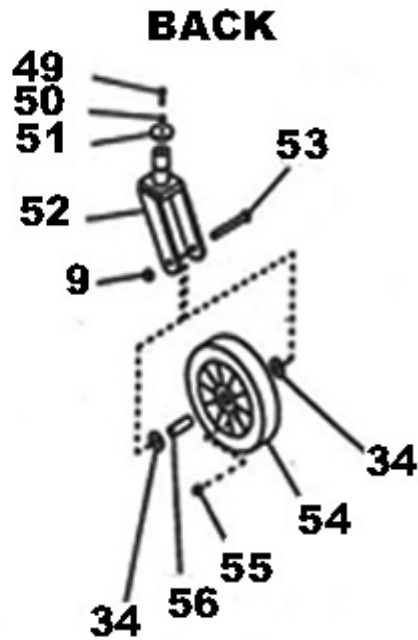
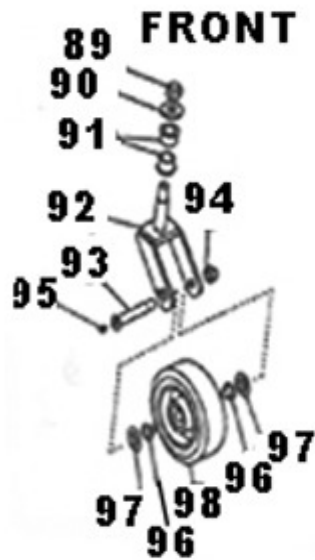


FIGURE	REFERENCE	DENOMINATION	AMOUNT
009	711.12000.66	NUT DIN982 M12	1
034	AT.11034.00	WASHER DIN125*	2
049	603.08025.86	SCREW DIN933 M8x25	1
050	105.08000.66	CIR-CLIP EXT. DIN7980	1
051	AT.11050.00	WASHER DIN125*	1
052	AT.11051.00	SUPPORT ART.	1
053	604.12100.86	SCREW DIN931 M12x100	1
054	AT.11053.01	WHEEL RIM	1
055	901.10000.33	GREASER DIN71412-A	1
056	AT.11055.00	BUSH	1
089	AT.21146.00	NUT	1
090	AT.21147.00	WASHER	1
091	AT.21148.00	BEARING	1
092	AT.11149.00	SOP. ART. WHEEL	1
093	AT.21150.00	AXLE CIL/ROS	1
094	AT.21151.00	NUT	1
095	901.10000.33	GREASER DIN71412-A	1
096	AT.21152.00	BEARING	2

07. WHEEL

WHEEL

FIGURE	REFERENCE	DENOMINATION	AMOUNT
097	AT.21153.00	GASKET	2
098	AT.11053.02	WHEEL RIM	1

BRUSHES

BRUSHES

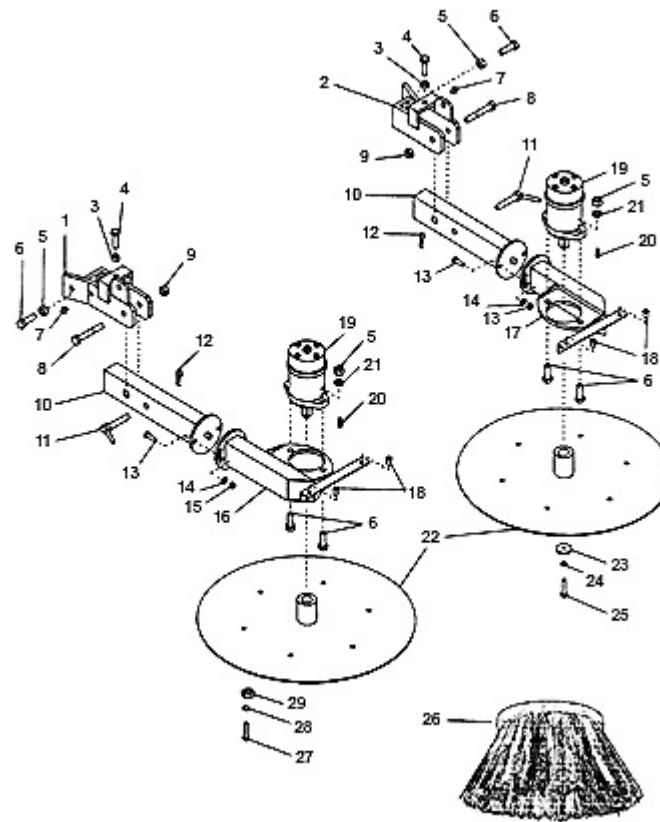


FIGURE	RÉFÉRENCE	NOM	QUANTITÉ
001	AT.11288.00	SUPPORT ART.	1
002	AT.11089.00	SUPPORT ART.	1
003	701.10000.66	NUT DIN934 M10x1.5	2
004	603.10050.86	SCREW	2
005	701.12000.66	NUT DIN934 M12x1.75	6
006	603.12045.86	SCREW DIN933	2
007	901.06000.33	GREASER DIN71412-A	2
008	604.12080.86	SCREW DIN931 M12x80	2
009	711.12000.66	NUT DIN982 M12	2
009	711.12000.66	NUT DIN982 M12	2
010	AT.11092.00	SOP. ART. BRAZO CEPILLO	2
011	AT.11093.00	EJE CIL/CPL BRAZO CEPILL	2
012	AT.11094.00	FEATHER DIN6885 KEY	2
013	604.08025.86	SCREW DIN931	4
014	101.08000.66	WASHER DIN125 D8	4
014	101.08000.66	WASHER DIN125 D8	4
015	711.08000.66	NUT DIN982 M8	4
016	AT.11096.00	BRAZO VIR. CEPILLO right.	1

BRUSHES

BRUSHES

FIGURE	RÉFÉRENCE	NOM	QUANTITÉ
017	AT.11097.00	BRAZO VIR. CEPILLO left	1
018	AT.11087.00	GREASER DIN71412-A	4
019	AT.11103.00	HYDRAULIC ENGINE	2
020	AT.11104.00	FEATHER DIN6885 KEY	2
021	104.12000.00	WASHER DIN7980 D12	4
021	104.12000.00	WASHER DIN7980 D12	4
022	AT.11098.00	FIXING SUPPORT	2
023	AT.11099.00	CIR-CLIP EXT.	2
024	104.08000.00	WASHER DIN7980 D8	2
024	104.08000.00	WASHER DIN7980 D8	2
025	603.08020.86	SCREW DIN933 M8x20	2
026	AT.11300.00	BROOM	2
027	603.08050.86	SCREW ISO7380	12
028	101.08000.66	WASHER DIN125 D8	12
028	101.08000.66	WASHER DIN125 D8	12
029	711.08000.66	NUT DIN982 M8	12

HYDRAULIC DIAGRAM INSTALLATION

HYDRAULIC DIAGRAM INSTALLATION

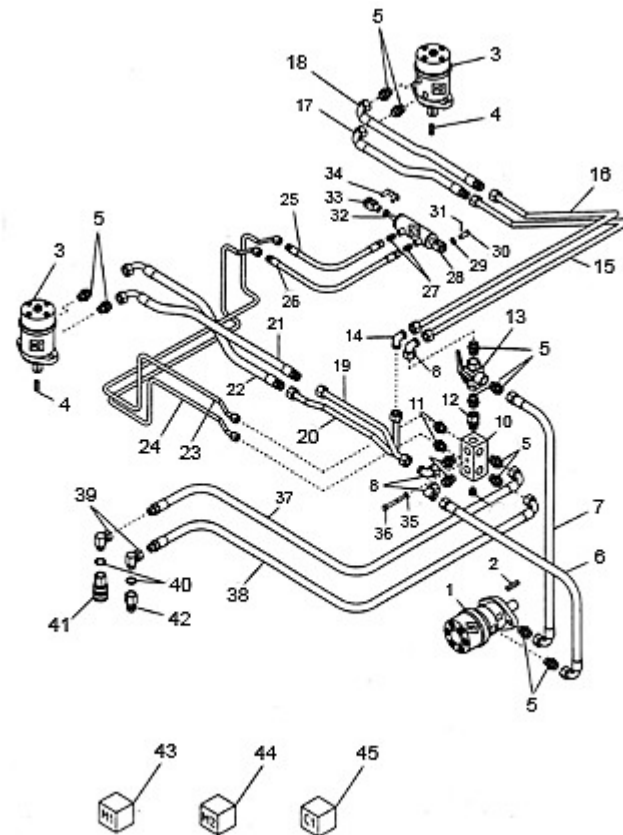


FIGURE	RÉFÉRENCE	NOM	QUANTITÉ
001	AT.11101.00	HYDRAULIC ENGINE	1
002	AT.11102.00	FEATHER DIN6885 KEY	1
003	AT.11103.00	HYDRAULIC ENGINE	2
004	AT.11104.00	FEATHER DIN6885 KEY	2
005	AT.11105.00	NIPPLE	13
006	AT.11106.00	HOSE	1
007	AT.11107.00	HOSE	1
008	AT.11108.00	NIPPLE	3
009	AT.11109.00	CAP	1
010	AT.11110.00	CONTROL VALVE	1
011	AT.11111.00	NIPPLE	2
012	AT.11112.00	NIPPLE	1
013	AT.11113.00	VALVE 3 VIAS	1
014	AT.11114.00	NIPPLE	1
015	AT.11115.00	HOSE	1
016	AT.11116.00	HOSE	1
017	AT.11117.00	HOSE	1
018	AT.11118.00	HOSE	1

HYDRAULIC DIAGRAM INSTALLATION

HYDRAULIC DIAGRAM INSTALLATION

FIGURE	RÉFÉRENCE	NOM	QUANTITÉ
019	AT.11119.00	HOSE	1
020	AT.11120.00	HOSE	1
021	AT.11121.00	HOSE	1
022	AT.11122.00	HOSE	1
023	AT.11123.00	HOSE	1
024	AT.11124.00	HOSE	1
025	AT.11125.00	HOSE	1
026	AT.11126.00	HOSE	1
027	AT.11127.00	NIPPLE M/M	2
028	AT.11128.00	CYLINDER D/E	1
029	101.10000.66	WASHER DIN125 D10	1
030	AT.11130.00	AXLE CIL/CPA	1
031	401.25030.60	PIN	1
032	AT.11061.00	NUT	1
033	AT.11132.00	ART. FORK	1
034	AT.11133.00	AXLE CIL/CPA	1
035	AT.11041.00	CIR-CLIP EXT.	1
036	AT.11134.00	BOLT	1
037	AT.11135.00	HOSE	1
038	AT.11136.00	HOSE	1
039	AT.11137.00	NIPPLE	2
040	AT.11138.00	GASKET SET	2
041	AT.11139.00	VALVE	1
042	AT.11140.00	VALVE	1
043	AT.11141.00	GASKET SET	1
044	AT.11142.00	GASKET SET	1
045	AT.11143.00	GASKET SET	1

ADAPTER ADAPTER



FIGURE	RÉFÉRENCE	NOM	QUANTITÉ
001	AT.10001.00	ADAPTER LEFT	0
002	AT.10002.00	ADAPTER RIGHT	0
003	AT.10003.00	PIN	0
004	AT.10004.00	SPRING	0
005	AT.10005.00	CIR-CLIP EXT.	0
006	AT.10006.00	ACC.LEVER	0
007	AT.10007.00	ACC.LEVER	0
008	AT.10008.00	CIR-CLIP EXT.	0
009	AT.10009.00	BOLT	0
010	AT.10010.00	BOLT	0
011	AT.10011.00	CYL. BARREL	0
012	AT.10012.00	SPRING COMPRESSION	0
013	AT.10013.00	SCREW DIN6912	0
014	AT.10014.00	WASHER	0
015	AT.10015.00	GUIDE	0

016	AT.10016.00	AXLE CIL/COA	0
017	AT.10017.00	SCREW DIN6912*	0
018	AT.10018.00	LATCH	0
019	AT.10019.00	LATCH	0
020	10.01318.00	CYLINDER ROD HEAD	0
021	901.08000.33	GREASER DIN71412-A M8x1,25	0
022	AT.10022.00	AXLE CIL/CPL	0
023	104.08000.00	WASHER DIN7980 D8	0
023	104.08000.00	WASHER DIN7980 D8	0
024	603.08015.86	SCREW DIN933 M8x15	0
025	AT.10025.00	CYLINDER S/E	0
026	AT.10026.00	ADAPTER LEFT	0
027	AT.10027.00	ADAPTER RIGHT	0
028	AT.10028.00	Plates LEFT	0
029	AT.10029.00	Plates RIGHT	0

SYSTEM WATERING KIT I

SYSTEM WATERING KIT I

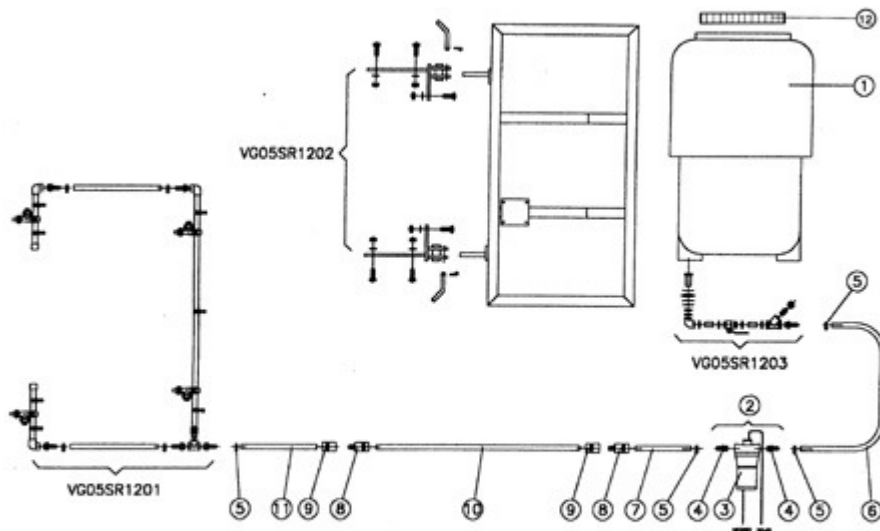


FIGURE	RÉFÉRENCE	NOM	QUANTITÉ
001	AT.12205.00	TANK	1
002	AT.12026.00	WATER PUMP	1
003	AT.12027.00	WATER PUMP	1
004	AT.12208.00	NIPPLE M/TB	2
005	912.16025.66	CLAMP	8
006	AT.12210.00	HOSE RUBBER B/P	1
007	AT.12211.00	HOSE RUBBER B/P	1
008	AT.12212.00	PLUG	2
009	AT.12213.00	PLUG	2
010	AT.12214.00	HOSE RUBBER B/P	1
011	AT.12215.00	HOSE RUBBER B/P	1
012	AT.12250.00	CAP	1

SYSTEM WATERING KIT II

SYSTEM WATERING KIT II

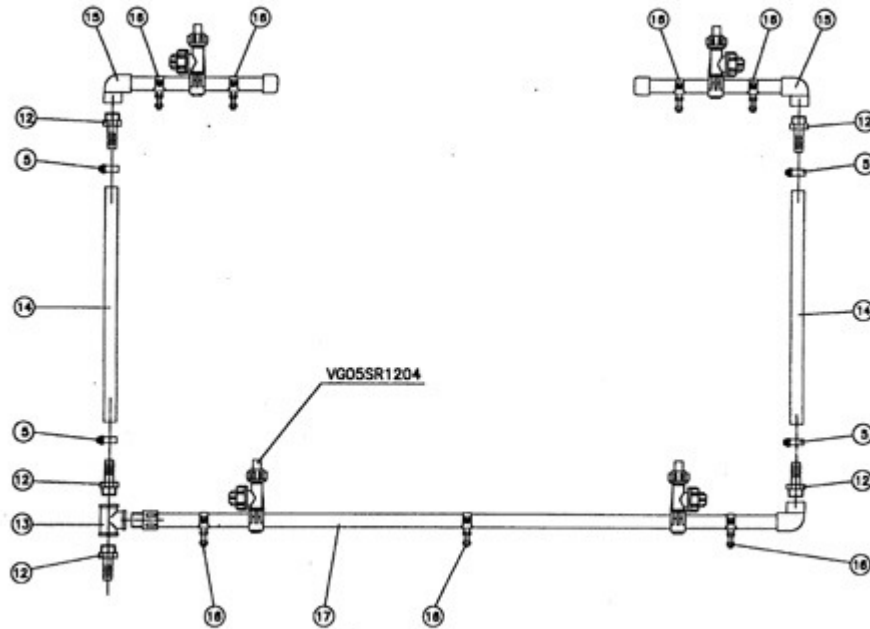


FIGURE	RÉFÉRENCE	NOM	QUANTITÉ
012	AT.12216.00	NIPPLE M/TB	6
013	AT.12217.00	NIPPLE H/H/H	1
014	AT.12018.00	HOSE RUBBER B/P	2
015	VG05SR1019D	RIGHT TUBE + SPRAY	1
015	VG05SR1019I	LEFT TUBE + SPRAY	1
016	AT.12220.00	CLAMP	7
017	AT.12221.00	TUBE COPPER	1

SYSTEM WATERING KIT III

SYSTEM WATERING KIT III

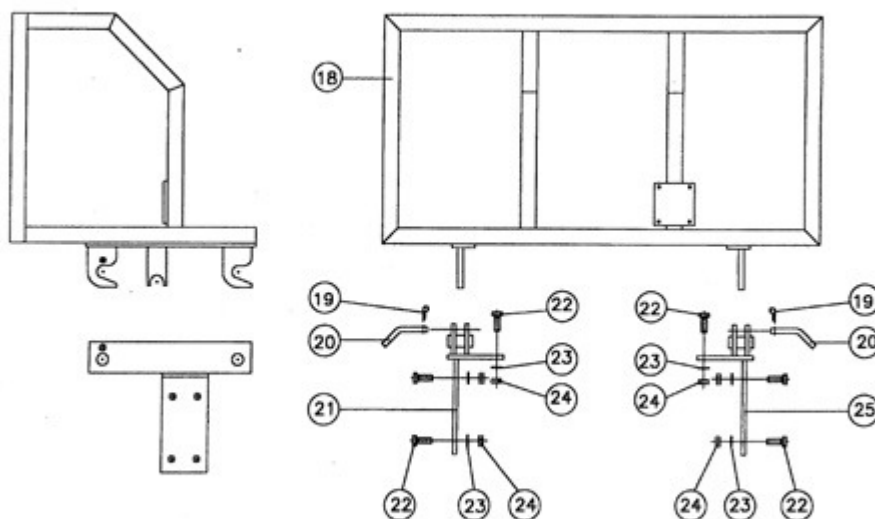


FIGURE	RÉFÉRENCE	NOM	QUANTITÉ
018	AT.12222.00	FIXING SUPPORT	1
019	AT.12223.00	PIN	2
020	AT.12024.00	AXLE CIL/CPA	2
021	AT.12025.00	FIXING SUPPORT	1
022	603.14035.86	SCREW DIN933	12
023	101.14000.66	WASHER DIN125 D14	12
024	701.14000.66	NUT DIN934 M14x2	12
025	AT.12229.00	FIXING SUPPORT	1

SYSTEM WATERING KIT IV

SYSTEM WATERING KIT IV

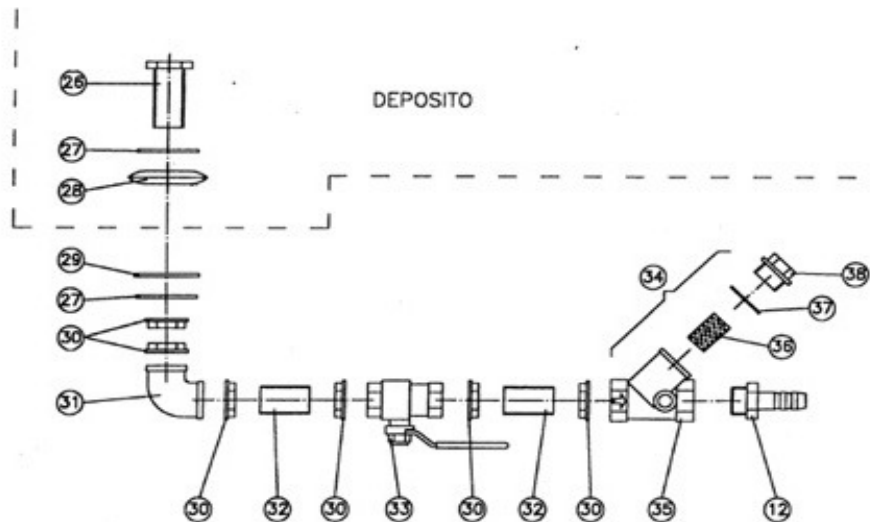


FIGURE	RÉFÉRENCE	NOM	QUANTITÉ
026	AT.12230.00	NIPPLE	1
027	AT.12031.00	WASHER	2
028	AT.12032.00	WASHER	1
029	AT.12233.00	WASHER	1
030	AT.12234.00	NUT	6
031	AT.12235.00	NIPPLE C90H/H	1
032	AT.12236.00	TUBE MET.	2
033	AT.12237.00	VALVE	1
034	AT.12238.00	WATER FILTER	1
035	AT.12239.00	WATER FILTER	1
036	AT.12240.00	WATER FILTER	1
037	AT.12241.00	CIR-CLIP EXT.	1
038	AT.12242.00	CAP	1

SYSTEM WATERING KIT V

SYSTEM WATERING KIT V

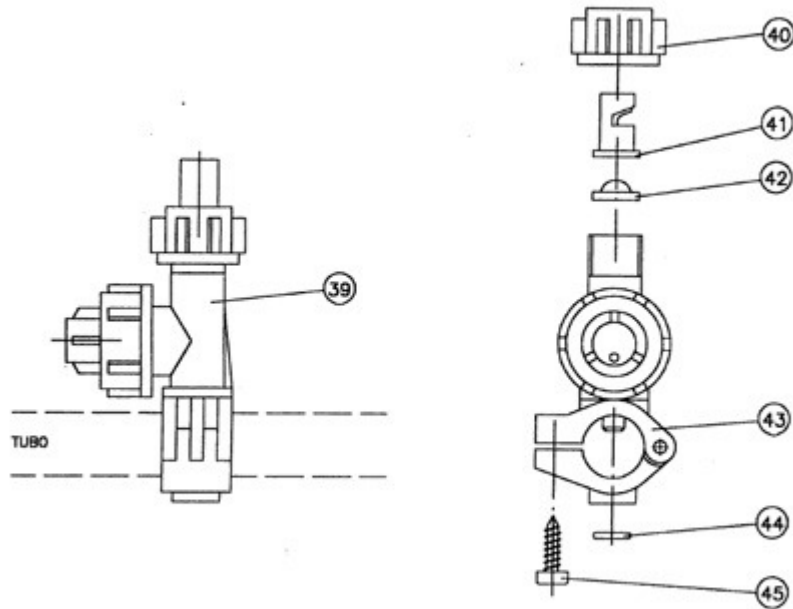


FIGURE	RÉFÉRENCE	NOM	QUANTITÉ
039	AT.11243.00	SPRINKLER NOZZLE	4
040	AT.12044.00	NIPPLE H/TB	1
041	AT.12045.00	SPRINKLER NOZZLE	1
042	AT.12246.00	WATER FILTER	1
043	AT.12247.00	SPRINKLER NOZZLE	1
044	AT.12248.00	GASKET SET	1
045	AT.12249.00	SCREW	1

09. MACHINE FUNCTIONS

SWEEPER ARMS

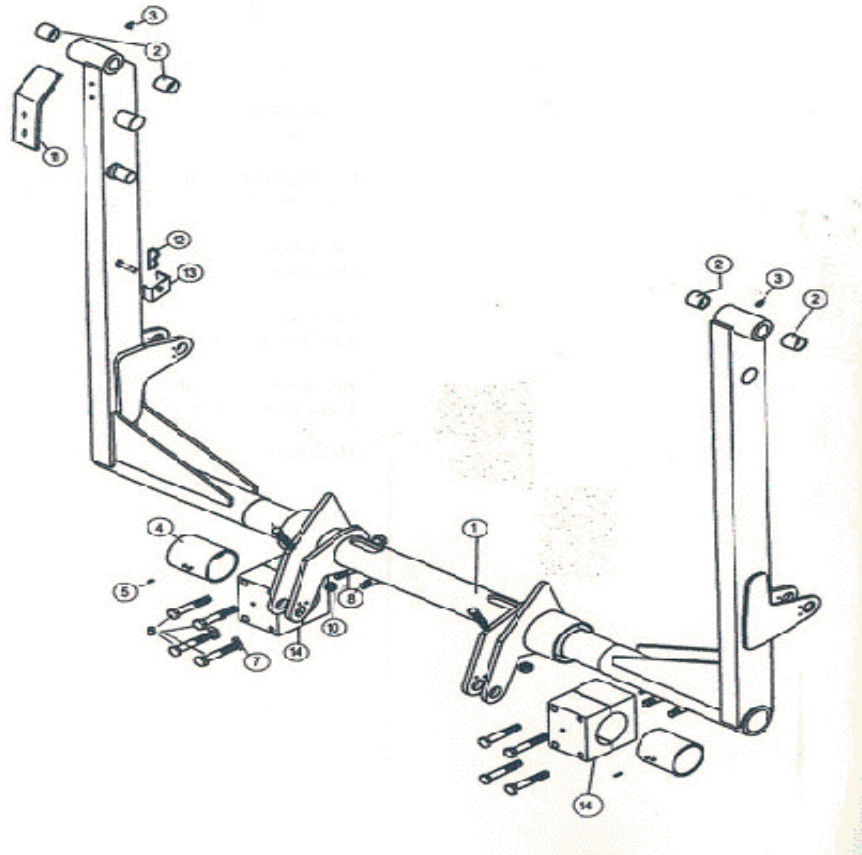


FIGURE	RÉFÉRENCE	NOM	QUANTITÉ
001	15.30200.05	SHOVEL ARM	1
002	08.00527.00	BEARING	4
003	901.08000.33	GREASER DIN71412-A M8x1,25	2
004	15.00926.00	BEARING	2
005	402.04020.00	PIN	2
006	604.16100.86	SCREW DIN931	8
007	105.16000.66	EQUIV.104.16000.00	16
008	604.16050.86	SCREW DIN931 M16x50	8
009	603.14080.86	SCREW DIN933	2
010	701.14000.66	NUT DIN934 M14x2	2
011	15.12145.00	STRIP SUPPORT	1
012	15.00836.00	PIN DIN11024 R4	1
013	15.12313.00	CLAMP	1
014	15.00925.00	BEARING SUPPORT	2

09. MACHINE FUNCTIONS

BODY TENSOR

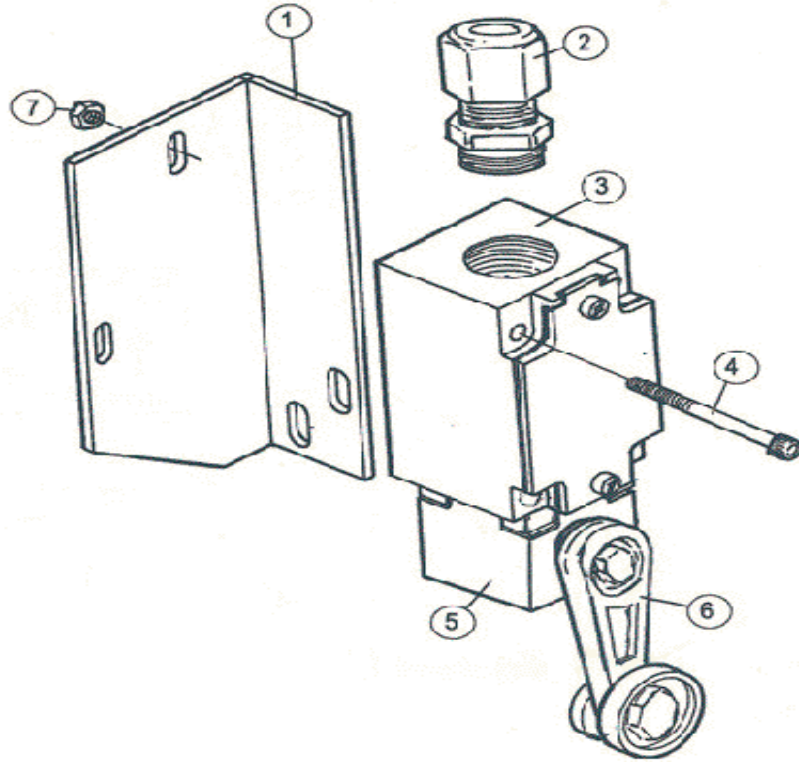


FIGURE	RÉFÉRENCE	NOM	QUANTITÉ
001	15.12120.00	SHAPE L MAT.	1
002	15.12293.00	GUARD TUBE	2
003	15.12295.00	TENSION BODY	2
004	601.05050.86	SCREW DIN912	4
005	15.12296.00	TENSION HEAD	2
006	15.12294.00	GEAR LEVER	2
007	711.05000.66	NUT DIN982 M5	4

09. MACHINE FUNCTIONS

SPECIAL HOPPER AND ACCESSORIES

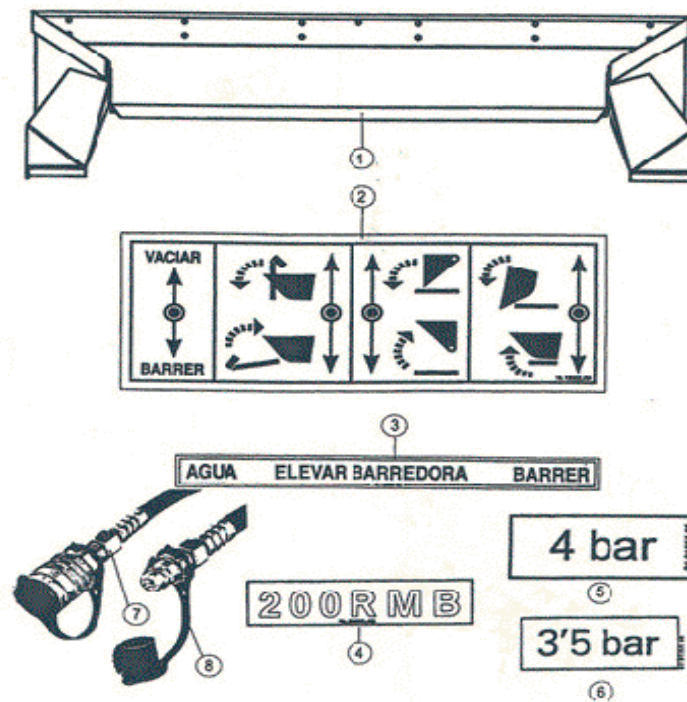


FIGURE	RÉFÉRENCE	NOM	QUANTITÉ
001	15.30230.02	SKIP	1
002	15.12322.00	PLATE AD. INDI	1
003	15.12323.00	PLATE AD. INDI	1
004	15.20006.00	INDICATOR	1
005	01.01355.05	PLATE AD. INDI	2
006	01.01355.03	PLATE AD. INDI	2
007	15.50124.00	CAP	2
008	15.50125.00	CAP	2

09. MACHINE FUNCTIONS

SWITCH SUPPORT

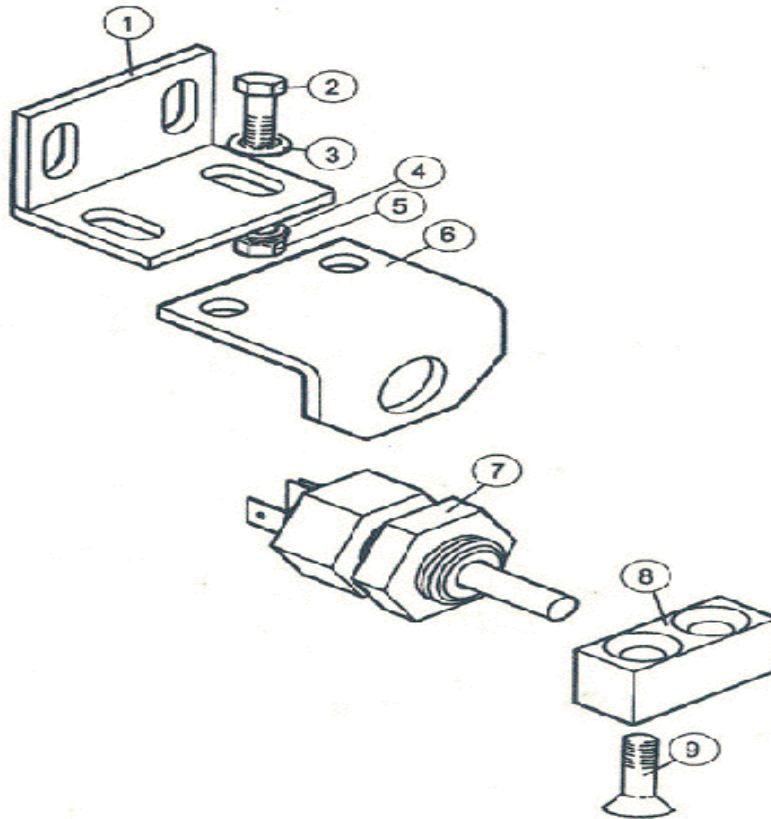


FIGURE	RÉFÉRENCE	NOM	QUANTITÉ
001	15.12301.00	BRACKET ANG.	1
002	603.06015.86	SCREW DIN933 M6x15	4
003	101.06000.66	WASHER DIN125 D6	4
004	105.06000.66	CIR-CLIP DIN7980	4
005	701.06000.66	NUT DIN934 M6X1	2
006	15.12300.00	BRACKET ANG.	1
007	15.12318.00	SWITCH	1
008	15.12312.00	BUTT	1
009	618.06020.86	SCREW DIN7991	2

09. MACHINE FUNCTIONS

CYLINDER SUPPORT ARM

HYDRAULIC FLANGES (14, 15, 16, 17, 18, 19)

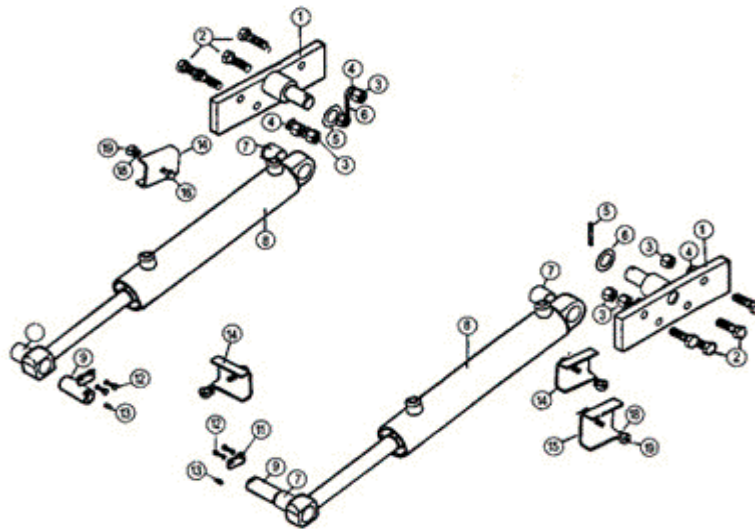


FIGURE	RÉFÉRENCE	NOM	QUANTITÉ
001	15.30220.00	SUPPORT ART.	2
002	604.16050.86	SCREW DIN931 M16x50	8
003	711.16000.66	NUT DIN982 M16 8.8 K	8
004	105.16000.66	EQUIV.104.16000.00	8
005	101.30000.66	WASHER DIN125 D30	2
006	401.05060.60	PIN	2
007	08.00527.00	BEARING	4
008	08.00500.08	CYLINDER D/E	2
009	15.01216.00	SHAFT CIL/COA	2
010	15.00832.00	PANEL	2
011	105.06000.66	CIR-CLIP DIN7980	4
012	603.06015.86	SCREW DIN933 M6x15	4
013	901.08000.33	GREASER DIN71412-A M8x1,25	2
014	15.10993.00	CLAMP U	3
015	15.10994.00	CLAMP U	1
016	604.06030.86	SCREW DIN931	3
017	604.06045.86	SCREW DIN931 M6x45	1
018	105.06000.66	CIR-CLIP DIN7980	4

09. MACHINE FUNCTIONS

CYLINDER SUPPORT ARM

FIGURE	RÉFÉRENCE	NOM	QUANTITÉ
019	711.06000.66	NUT DIN982 M6	4

09. MACHINE FUNCTIONS

BUCKET CYLINDER

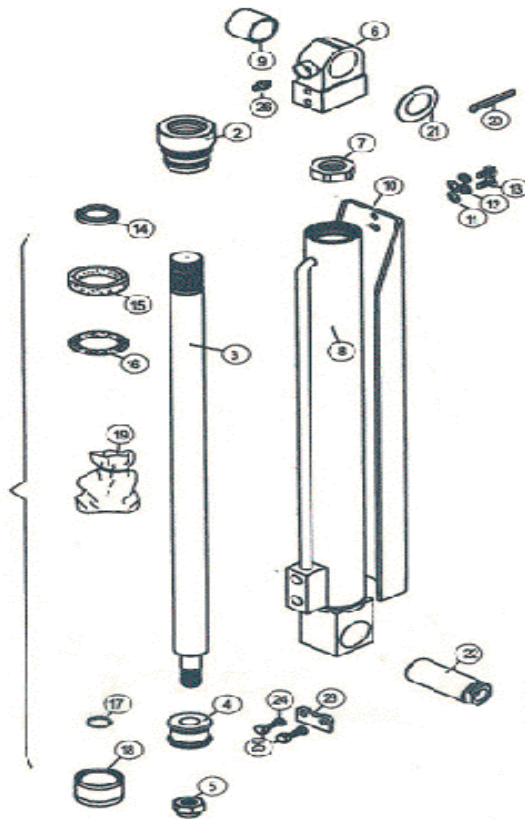


FIGURE	RÉFÉRENCE	NOM	QUANTITÉ
001	15.00670.01	CYLINDER D/E	2
002	15.00676.00	GUIDE	1
003	15.00677.00	SPINDLE	1
004	10.00675.02	PISTON	1
005	718.16015.66	NUT	1
006	60.01115.05	CYLINDER ROD HEAD	1
007	54.01117.00	NUT	1
008	15.00671.01	CYL. BARREL	1
009	55.00527.00	BUSH	1
010	15.10670.01	CYL. GUARD	1
011	101.08000.66	WASHER DIN125 D8	2
012	105.08000.66	CIR-CLIP EXT. DIN7980	2
013	630.08015.96	SCREW ISO7380	2
014	228.02836.50	WIPER RING	1
015	229.02838.50	GASKET DIN6505	1
016	201.03335.50	O-RING DIN3770	1
017	201.01725.50	O-RING DIN3770	1
018	207.04032.50	JUNTA ESTAN. COMPAC. 40X32	1

09. MACHINE FUNCTIONS

BUCKET CYLINDER

FIGURE	RÉFÉRENCE	NOM	QUANTITÉ
019	15.99670.00	GASKET SET	1
020	401.04050.60	PIN DIN94 4x50	1
021	101.30000.66	WASHER DIN125 D30	1
022	08.00135.00	SHAFT CIL/COA	1
023	15.00832.00	PANEL	2
024	105.06000.66	CIR-CLIP DIN7980	4
025	603.06015.86	SCREW DIN933 M6x15	4
026	901.08000.33	GREASER DIN71412-A M8x1,25	2

09. MACHINE FUNCTIONS

ARM CYLINDER

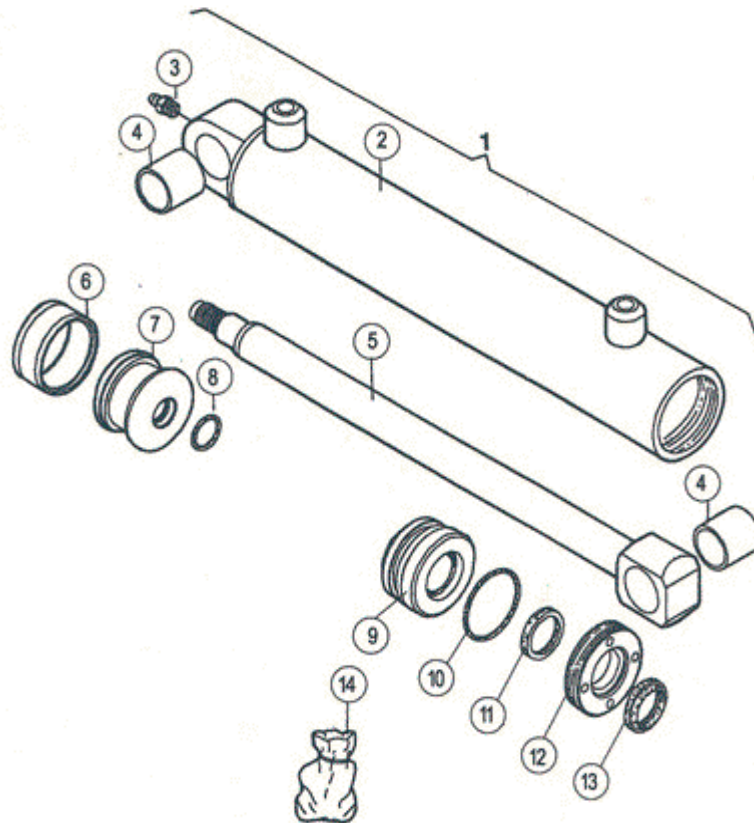


FIGURE	RÉFÉRENCE	NOM	QUANTITÉ
001	08.00500.08	CYLINDER D/E	2
002	08.00520.08	CUERPO CIL. 63X476 SOLD.	2
003	901.08000.33	GREASER DIN71412-A M8x1,25	2
004	08.00527.00	BEARING	4
005	08.00525.01	SPINDLE	2
006	207.63028.50	GASKET	2
007	08.00521.04	PISTON	2
008	201.22003.50	O-RING DIN3770	2
009	08.00528.02	GUIDE	2
010	201.05153.50	O-RING DIN3770	2
011	217.30006.50	GASKET DIN6505	2
012	08.00530.01	NUT	2
013	203.03041.00	WIPER RING	2
014	08.99500.05	GASKET SET	2

09. MACHINE FUNCTIONS

OIL TANK

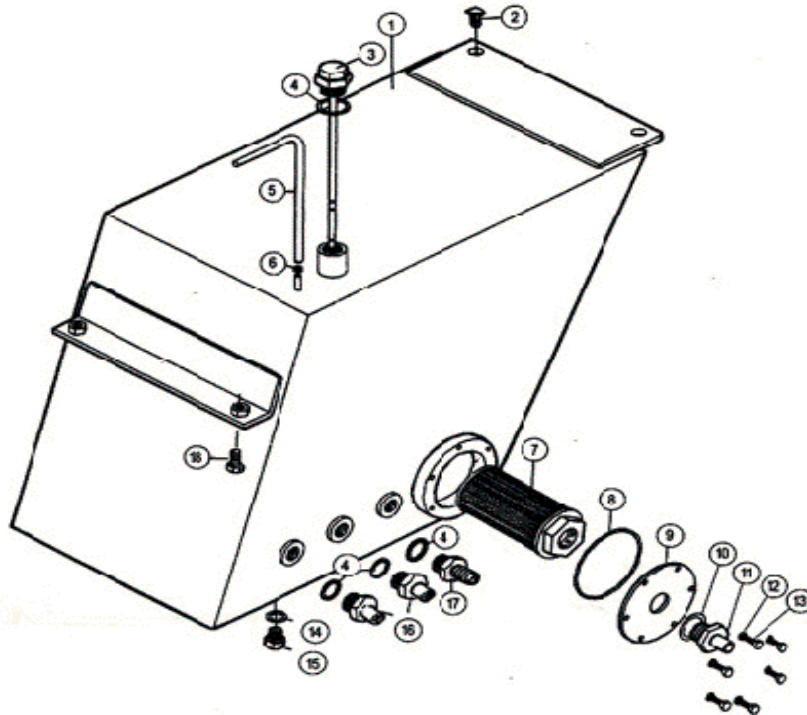


FIGURE	RÉFÉRENCE	NOM	QUANTITÉ
001	15.01420.02	HYDRAULIC TANK 50L	1
002	605.10030.86	SCREW DIN931	2
003	09.00631.00	ROD OIL LEVEL	1
004	08.00316.01	GASKET MET. BUNA	4
005	15.10750.00	TUBO PLAS. TRANS. D6xD9x300	1
006	948.00907.00	CLAMP SPRING D9	1
007	09.00630.61	OIL FILTER ASP. 25 L/MIN	1
008	201.75003.50	O-RING DIN3770 75x81x3	1
009	02.01423.00	O-RING DIN3770	1
010	45.01423.00	GASKET MET. BUNA	1
011	02.01433.00	SOP. FILTRO ASP. 18x41	1
012	105.06000.66	CIR-CLIP DIN7980	6
013	603.06015.86	SCREW DIN933 M6x15	6
014	107.14000.10	WASHER AL 14x20x1.5	1
015	00.02803.00	SCREW DIN910*	1
016	08.00301.00	NIPPLE M/TB 1/2G-D16	2
017	08.00313.00	FITTING M/M 1/2 G-3/8 G	1
018	603.10020.86	SCREW DIN933 M10x20	2

09. MACHINE FUNCTIONS

CONTROLS PANEL

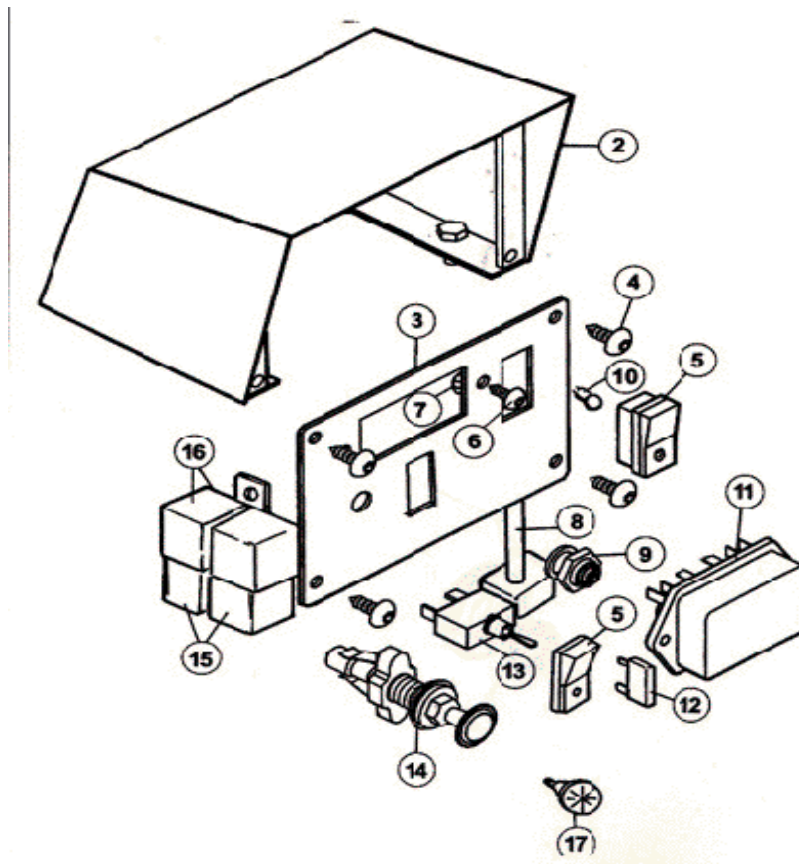


FIGURE	RÉFÉRENCE	NOM	QUANTITÉ
001	15.09220.00	DASH, PANEL	1
002	09.00922.03	BOX.	1
003	15.12308.01	FLANGE	1
004	630.06015.96	SCREW ISO7380 M6x15	4
005	15.12317.00	SWITCH	2
006	630.05020.96	SCREW ISO7380	3
007	701.05000.66	NUT DIN934 M5x0.8	3
008	15.12316.01	LENGTH ELEC. INSTAL.	1
009	43.50025.00	DUST EXCLUDER	1
010	15.12320.00	BULB	2
011	46.00826.01	FUSE BOX	1
012	43.50032.00	FUSE 15A	3
013	43.50024.01	SWITCH	1
014	09.70034.00	SWITCH	1
015	15.12298.00	PLUG	2
016	43.01530.02	RELAY 40 AMP. 5 CONTAC. 6.3MM	2
017	46.01532.00	RED REFLECTOR	2
018	15.12315.00	SECTION I / E 3440X15	1

09. MACHINE FUNCTIONS

CONTROLS PANEL

FIGURE	RÉFÉRENCE	NOM	QUANTITÉ
019	15.14315.00	SECTION I / E 15X2000	1
020	15.13315.00	SECTION I / E 10X800 SWEEPER	1

09. MACHINE FUNCTIONS

RM PIPING SCHEME

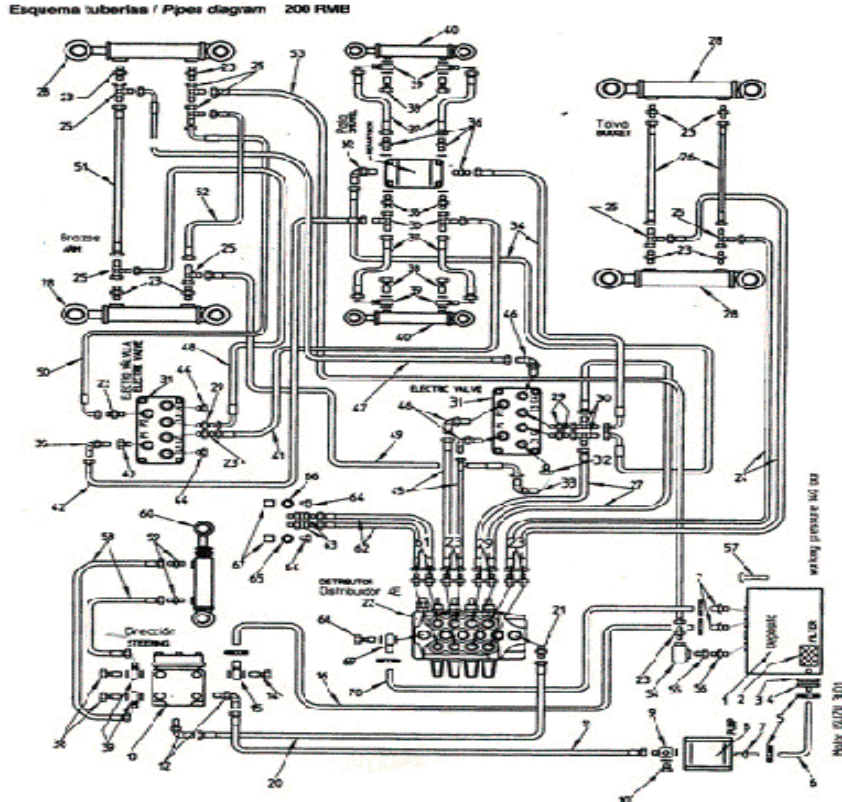


FIGURE	RÉFÉRENCE	NOM	QUANTITÉ
001	15.01420.02	HYDRAULIC TANK 50L	1
002	09.00630.61	OIL FILTER ASP. 25 L/MIN	1
003	201.75003.50	O-RING DIN3770 75x81x3	1
004	02.01432.00	FILTER SUPPORT	1
005	N/S	NOT DISTRIBUTED	0
006	10.01360.00	TUBO GOMA B/P 15x25x880	6
007	08.00301.00	NIPPLE M/TB 1/2G-D16	1
008	15.01157.00	HYDR. PUMP (ISUZU)	1
009	08.00311.00	NIPPLE O/M	1
010	08.00320.00	NIPPLE SCREW SIM.	1
011	15.02081.00	TUBE R2T1 / 2 1800TL7/8JIC-1/2G	1
012	55.54051.00	ELBOW C90MM NIPPLE	1
013	45.01005.00	STEERING VALVE	1
014	08.00315.00	NIPPLE SCREW SIM.	1
015	08.00297.00	NIPPLE O/TB	1
016	15.01615.00	TUBO GOMA B/P 15x25x1124	1
017	N/S	NOT DISTRIBUTED	0
018	N/S	NOT DISTRIBUTED	0

09. MACHINE FUNCTIONS

RM PIPING SCHEME

FIGURE	RÉFÉRENCE	NOM	QUANTITÉ
019	N/S	NOT DISTRIBUTED	0
020	15.02080.00	TUBE R2T1 / 2 J 900XTL7/8XTL7/8	1
021	45.03652.00	NIPPLE M/M	1
022	15.12319.00	4E DISTRIBUTOR	1
023	08.00319.00	NIPPLE M/M	1
024	54.01823.00	HOSE R1T3/8	1
025	44.01453.00	THREE-WAY UNION M/M/TL	1
026	10.00698.00	HOSE R1T3/8	1
027	15.40125.02	TUBE R1T1 / 4 2650X1/4C90XTL1/4	1
028	08.00500.08	CYLINDER D/E	1
029	19.00720.00	NIPPLE M/M	1
030	15.13140.00	RACORD FORT M/M/TL 1/4 GAS	1
031	42.70100.00	VALVE	1
032	10.01353.00	NIPPLE M/H	1
033	43.01453.00	ELBOW C90M/M NIPPLE	1
034	15.12304.00	TUBE R1T1 / 4 650X1/4C90C1/4TL	1
035	15.01453.00	ELBOW C90M/TL NIPPLE	1
036	28.00337.00	FITTING M/M 1/4 G-1/4 G	1
037	15.40126.00	HOSE R1T1/4	1
038	28.00340.00	SIMPLE SCREW FITTING 1/4 Gx26	1
039	28.00339.00	NIPPLE O/M	1
040	15.00670.01	CYLINDER D/E	1
041	42.00503.00	HYDRAULIC HOSE R1T1/4 590 TL-TL	1
042	15.12304.01	TUBE R1T1 / 4 800X1/4C90XTL1/4	1
043	28.00338.00	NIPPLE M/H	1
044	60.00802.00	CAP	1
045	54.01823.00	HOSE R1T3/8	1
046	43.01453.00	ELBOW C90M/M NIPPLE	1
047	15.12306.00	TUBE R1T3 / 8 450X3/8C90X3/8TL	1
048	15.12306.00	TUBE R1T3 / 8 450X3/8C90X3/8TL	1
049	45.01351.03	HOSE R1T3/8	1
050	15.12620.00	TUBE R1T3 / 8 600X3/8C90C3/8C90	1
051	15.01234.00	HOSE R1T3/8	1
052	15.01235.00	HOSE R1T3/8	1
053	08.00318.00	HOSE R1T3/8	1
054	47.01469.00	VALVE	1

09. MACHINE FUNCTIONS

RM PIPING SCHEME

FIGURE	RÉFÉRENCE	NOM	QUANTITÉ
055	60.13016.00	NIPPLE M/TL	1
056	08.00313.00	FITTING M/M 1/2 G-3/8 G	1
057	09.00631.00	ROD OIL LEVEL	1
058	46.50110.01	HOSE R1T1/4	1
059	19.00720.01	NIPPLE M/M	1
060	15.01050.02	CYLINDER D/E	1
061	45.03652.00	NIPPLE M/M	1
062	15.12305.00	TUBE R2T1 / 2 2500X7/8JIC-7/8JI	1
063	55.50530.00	RACOR PAS. M / M 7 / 8 JIC X 7 / 8 J	1
064	55.50490.00	CONNECTOR M / TL 7/8JIC-1/2GAS	1
065	15.50125.00	CAP	1
066	15.50124.00	CAP	1
067	16.01396.00	CONEX VALVE. RAP. 1 / 2 G COMP	1
068	08.00315.00	NIPPLE SCREW SIM.	1
069	08.00297.00	NIPPLE O/TB	1
070	15.01236.00	TUBO GOMA B/P 15x25x1345	1

09. MACHINE FUNCTIONS

RH PIPE SCHEME

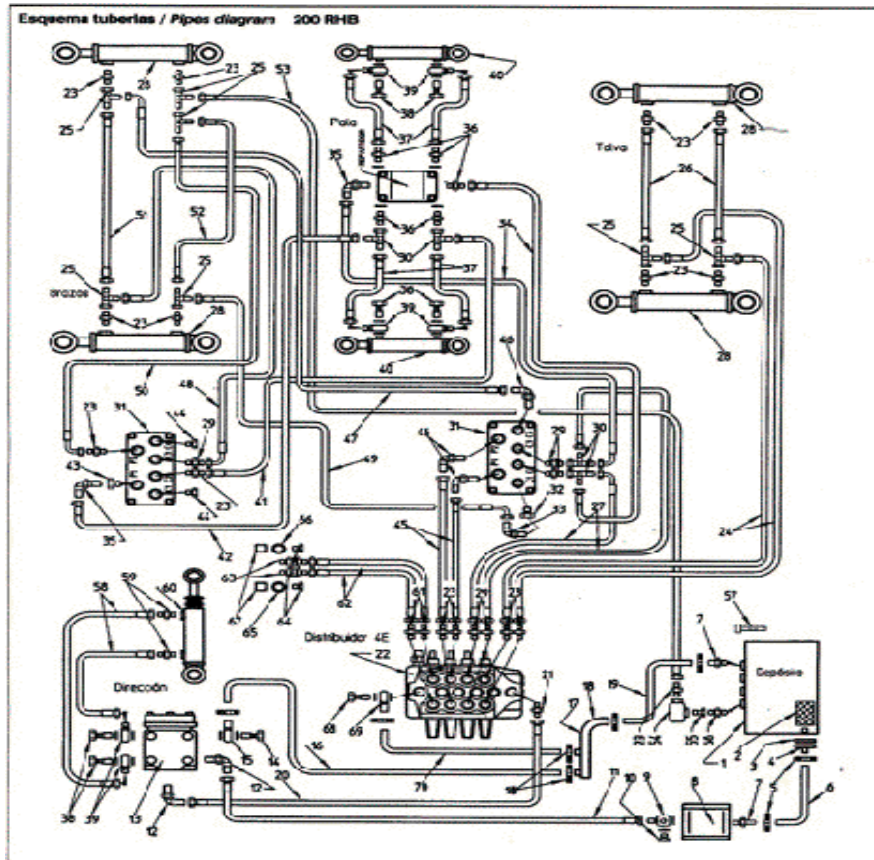


FIGURE	RÉFÉRENCE	NOM	QUANTITÉ
001	15.01420.02	HYDRAULIC TANK 50L	1
002	09.00630.61	OIL FILTER ASP. 25 L/MIN	1
003	201.75003.50	O-RING DIN3770 75x81x3	1
004	02.01432.00	FILTER SUPPORT	1
005	N/S	NOT DISTRIBUTED	0
006	10.01360.00	TUBO GOMA B/P 15x25x880	1
007	08.00301.00	NIPPLE M/TB 1/2G-D16	1
008	15.01157.00	HYDR. PUMP (ISUZU)	1
009	08.00311.00	NIPPLE O/M	1
010	08.00320.00	NIPPLE SCREW SIM.	1
011	15.02081.00	TUBE R2T1 / 2 1800TL7/8JIC-1/2G	1
012	55.54051.00	ELBOW C90MM NIPPLE	1
013	45.01005.00	STEERING VALVE	1
014	08.00315.00	NIPPLE SCREW SIM.	1
015	08.00297.00	NIPPLE O/TB	1
016	10.00694.00	RUBBER TUBE B / P 15x25x600	1
017	10.00692.00	EMPALME MANGUERA	1
018	912.20032.00	CLAMP	1

09. MACHINE FUNCTIONS

RH PIPE SCHEME

FIGURE	RÉFÉRENCE	NOM	QUANTITÉ
019	46.00304.00	TUBO GOMA B/P 15x25x490	1
020	15.02080.00	TUBE R2T1 / 2 J 900XTL7/8XTL7/8	1
021	45.03652.00	NIPPLE M/M	1
022	15.12319.00	4E DISTRIBUTOR	1
023	08.00319.00	NIPPLE M/M	1
024	54.01823.00	HOSE R1T3/8	1
025	44.01453.00	THREE-WAY UNION M/M/TL	1
026	10.00698.00	HOSE R1T3/8	1
027	15.40125.02	TUBE R1T1 / 4 2650X1/4C90XTL1/4	1
028	08.00500.08	CYLINDER D/E	1
029	19.00720.00	NIPPLE M/M	1
030	15.13140.00	RACORD FORT M/M/TL 1/4 GAS	1
031	42.70100.00	VALVE	1
032	10.01353.00	NIPPLE M/H	1
033	43.01453.00	ELBOW C90M/M NIPPLE	1
034	15.12304.00	TUBE R1T1 / 4 650X1/4C90C1/4TL	1
035	15.01453.00	ELBOW C90M/TL NIPPLE	1
036	28.00337.00	FITTING M/M 1/4 G-1/4 G	1
037	15.40126.00	HOSE R1T1/4	1
038	28.00340.00	SIMPLE SCREW FITTING 1/4 Gx26	1
039	28.00339.00	NIPPLE O/M	1
040	15.00670.01	CYLINDER D/E	1
041	42.00503.00	HYDRAULIC HOSE R1T1/4 590 TL-TL	1
042	15.12304.01	TUBE R1T1 / 4 800X1/4C90XTL1/4	1
043	28.00338.00	NIPPLE M/H	1
044	60.00802.00	CAP	1
045	54.01823.00	HOSE R1T3/8	1
046	43.01453.00	ELBOW C90M/M NIPPLE	1
047	15.12306.00	TUBE R1T3 / 8 450X3/8C90X3/8TL	1
048	15.12306.00	TUBE R1T3 / 8 450X3/8C90X3/8TL	1
049	45.01351.03	HOSE R1T3/8	1
050	15.12620.00	TUBE R1T3 / 8 600X3/8C90C3/8C90	1
051	15.01234.00	HOSE R1T3/8	1
052	15.01235.00	HOSE R1T3/8	1
053	08.00318.00	HOSE R1T3/8	1
054	47.01469.00	VALVE	1

09. MACHINE FUNCTIONS

RH PIPE SCHEME

FIGURE	RÉFÉRENCE	NOM	QUANTITÉ
055	60.13016.00	NIPPLE M/TL	1
056	08.00313.00	FITTING M/M 1/2 G-3/8 G	1
057	09.00631.00	ROD OIL LEVEL	1
058	46.50110.01	HOSE R1T1/4	1
059	19.00720.01	NIPPLE M/M	1
060	15.01050.02	CYLINDER D/E	1
061	45.03652.00	NIPPLE M/M	1
062	15.12305.00	TUBE R2T1 / 2 2500X7/8JIC-7/8JI	1
063	55.50530.00	RACOR PAS. M / M 7 / 8 JIC X 7 / 8 J	1
064	55.50490.00	CONNECTOR M / TL 7/8JIC-1/2GAS	1
065	15.50125.00	CAP	1
066	15.50124.00	CAP	1
067	16.01396.00	CONEX VALVE. RAP. 1 / 2 G COMP	1
068	08.00315.00	NIPPLE SCREW SIM.	1
069	08.00297.00	NIPPLE O/TB	1
070	15.01360.00	RUBBER HOSE B/P 15x25x800	1

INDEX

Recollector

Recollector 2

07. WHEEL

Wheel 5

brushes

brushes 7

Hydraulic diagram installation

Hydraulic diagram installation 9

ADAPTER

ADAPTER 11

System watering kit I

System watering kit I 12

System watering kit II

System watering kit II 13

System watering kit III

System watering kit III 14

System watering kit IV

System watering kit IV 15

System watering kit V

System watering kit V 16

09. MACHINE FUNCTIONS

sweeper arms 17

body tensor 18

special hopper and accessories 19

Switch Support 20

cylinder support arm 21

bucket cylinder 23

ARM CYLINDER	25
Oil tank	26
Controls panel	27
RM piping scheme	29
RH pipe scheme	32